



Investment Opportunities in Kenya's Conservancies

2025



Forward

Wildlife conservancies have become critical engines for conservation and community development - safeguarding biodiversity, supporting local livelihoods, and enabling landowners to coexist with wildlife.



Today, conservancies protect over 18% of Kenya's land and generate vital income for local communities, with tourism contributing approximately 65% of their annual revenue, covering essential costs such as conservation programs, land lease payments, and salaries.

Wildlife in Kenya, especially in the north of the country, represents a lucrative economic asset whose contribution has been underestimated and potential unrealized. KWCA's new strategic plan 2024-2030 seeks to accelerate the growth of effective, resilient, and inclusive conservancies to positively impact local communities and wildlife. The strategy seeks to support conservancies to realize improved sustainable monetary and non-monetary benefits and to promote equitable benefits sharing arrangements in the conservancies.

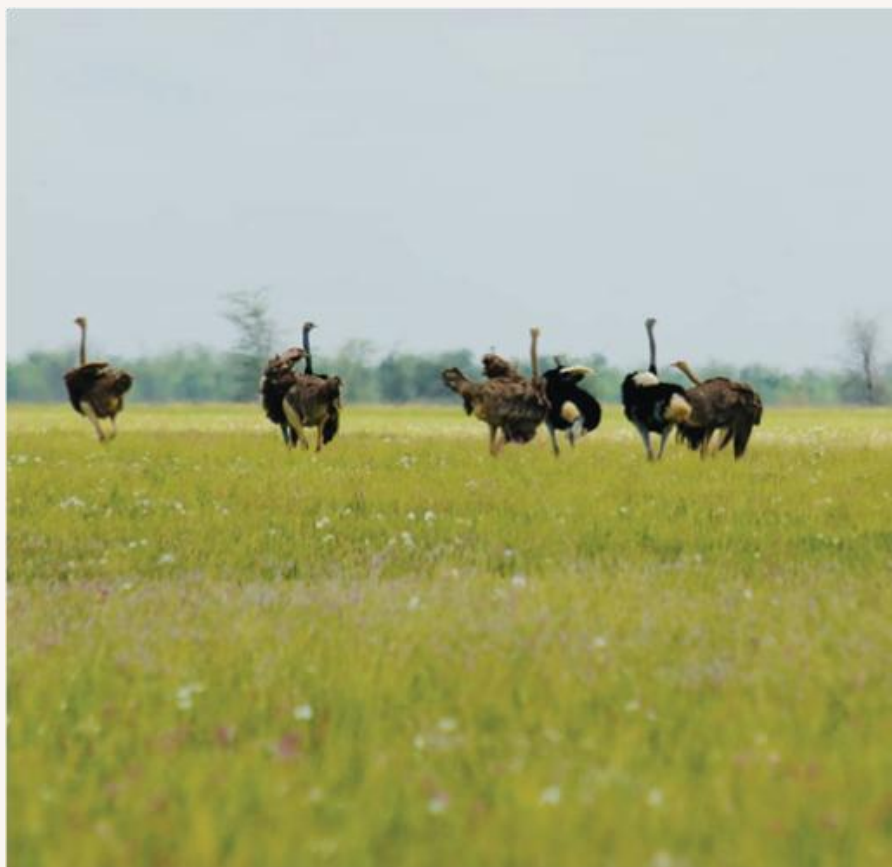
In line with these goals, KWCA has compiled this prospectus. It showcases investment-ready opportunities in Kenya's conservancies across four main sectors – ecotourism, carbon credits, livestock and nature-based enterprises. Individually and collectively, they represent attractive vehicles for investors keen on social, environmental, and biodiversity outcomes from their investments. The prospectus highlights these opportunities from conservancies and landscape associations spanning the length and breadth of Kenya. It is meant to serve as a first step in initiating dialogue between the private sector and the conservancies. Investors seeking more information on the detailed offering and business plan for specific opportunities are encouraged to reach out to the conservancy / landscape association representatives and the KWCA team at invest@kwcakenya.com.

North Eastern Conservancies



Bora' Ana Community Wildlife Conservancy, Garissa

“A refuge for reticulated giraffe”



Bora' Ana is a community-led conservancy whose primary motivation is the conservation of the endangered reticulated giraffes, which face poaching threats from Dadaab Refugee Complex.

It is 66,136 ha and is home to diverse and unique wildlife that is typical of northern Kenya. Among the endangered species are the hirola antelope. The area has vast rolling terrain with beautiful vegetation habitats. The high temperatures support a high diversity of reptiles and insects.

A key objective of the conservancy currently is the development of ecotourism and other nature-based enterprises to support socioeconomic empowerment of the communities.



Tourism Opportunity

Development of **suitable accommodation** to accommodate the growing number of visitors from the county and beyond.

Other Opportunities

Honey production and bee farming. Supported by high temperatures and large strands of indigenous trees and shrubs associated with high-quality honey.

Livestock trading. Establishing external markets for local beef, mutton and camel meat and livestock products.

Sabuli Wildlife Conservancy, Wajir

“A blend of culture and biodiversity”



Sabuli is a 191,000-ha pioneering community conservancy managed by local communities and focused on the promotion of peaceful coexistence among communities and between people and wildlife.

The land is rich in culture and biodiversity, famous for its indigenous wildlife such as Somali giraffes, Somali Ostrich, Beisa Oryx, Genenuk and other species associated with northern Kenya. It's also rich in birdlife and reptiles.



Tourism Opportunity

Halal Eco-Lodge Development. Gives the investor the chance to establish the first-ever Halal-certified eco-lodge in northern Kenya. The hot climate is an opportunity for solar-powered operations. There is a growing market of ethical and Islamic-conscious travellers. With great potential for exclusive wildlife safaris. There is full community support for it, and eager to offer cultural tourism based on the rich Somali heritage.

Cultural and Conservation Centre. A visitor education centre combining Somali pastoralist traditions with wildlife conservation. The target market includes schools, researchers, and international visitors.

Commercial Craft Centre. Anchored on the local artisans and women's groups who make handmade crafts.

Other Opportunities

Green building technologies - suitable for arid climates

Conservation Impact Projects (CSR & ESG)

Carbon trading

Kamuthe Wildlife Conservancy, Garissa

“Garissa’s hidden gem”



Kamuthe Wildlife Conservancy is a 33,000-ha conservation land managed by the local community. It is 40 km from Garissa town in Kamuthe Community Land – the first trust land in Kenya to be registered under the Community Land Act, 2016.

The conservancy has a diversity of scenic landscapes, including hills and river valleys. The diverse vegetation supports unique biodiversity, including endangered species such as the Reticulated giraffe, Grevy’s zebra. African wild dogs and a variety of birds such as the Somali Ostrich and vultures. The conservancy has an approved management plan to guide sustainable conservation and nature-based enterprises, such as tourism.



Tourism Opportunity

Development of **suitable accommodation**: A site is identified to be discussed with the investor.

Enabling factors include easy access, strategic location on the LAPSSET Corridor, and proximity to the River Tana. Activities include guided tours, birdwatching, cultural tourism, and water adventure. There is a rich cultural heritage to support cultural safaris.

Other Opportunities

Renewable Energy: Solar energy investments are viable due to high sunlight intensity.

Mining and Quarrying: Regulated extraction of gypsum and limestone.

Northern Rangelands



Meibae Community Wildlife Conservancy, Samburu

“The home of iconic wildlife”

Meibae Conservancy was established to advance a sustainable conservation of wildlife and cultural heritage. It is a pristine wilderness with fascinating scenery and magical sunsets.

Like the rest of the Samburu area, Meibae is a biodiversity hotspot that is home to some of the most iconic wildlife, including endangered species such as the Grevy’s zebra, Beisa oryx, African wild dogs, and elephants. It is a model of ecological restoration and sustainability.



Tourism Opportunity

Development of 12-banda eco-lodge. Success factors include the rich wildlife experience for which Samburu is renowned. There are vast opportunities for innovative cultural and adventure safaris.



Ewaso Nyiro River Trail

Proposed Multi-Conservancy Hiking Trail in Northern Kenya

Nature tourism is one of the world's fastest-growing tourism sectors. Fueled by an increasing desire for travellers to connect with nature and a growing awareness of environmental issues, nature-based tourism is experiencing significant growth, which will likely continue.

A multi-day wilderness hiking trail with the required facilities and amenities in the landscape of Northern Kenya, with its magnificent vistas and abundant wildlife, fits these trends perfectly. Such a trail does not currently exist.

We propose to build a multi-day hiking/backpacking trail from the Nkoteyia Eco Lodge to the new Nasuulu Banda along the Ewaso Nyiro River with the necessary developed waypoints. The total distance of the trail is approximately 86 kilometres.



Tourism Opportunity

Co-investment. To raise capital for the project components such as trail clearing and marking, structure construction, start and finish markers, annual maintenance, and grand launching.



Shurr Community Conservancy, Marsabit

“Haven for endemic birds”

Shurr Conservancy is a community-owned eco-tourism enterprise in Marsabit County.

The natural splendour of the area makes it a prime destination for adventure seekers. It hosts unique biodiversity, which includes endemic bird species and large mammals of northern Kenya.

The conservancy aims to be a self-sustaining model for community-owned conservation, protecting key species, enhancing community development.



Tourism Opportunity

Development of **an eco-lodge**

The attractive landscape and rich wildlife greatly enhance the viability of the enterprise. There are also many products to supplement the lodge, such as cultural safaris and nature walks



Losesia Individual Ranchers Ranch, Samburu

“The ranch of a big dream”



Losesia Individual Ranchers Ranch is a 41,743-ha ranch in Waso East, Samburu County. It is constituted by 35 individual ranchers and is being developed into a multi-use conservation and regenerative enterprise hub. The land is mainly savannah grasslands dotted with acacia woodlands, numerous kopjes, dry riverbeds, and wetlands.

It is undeveloped, unsettled, and unpolluted and is strategically suited for conservation, livestock, and tourism development.

The ranch is rolling out a multi-use development model integrating wildlife conservation (including endangered species such as black rhinos), eco-tourism, high-value livestock production, clean energy generation, and climate finance through carbon credits.

It is located 85km from Isiolo International Airport. 40km from the Great North Road and strategically next to the LAPPSET corridor that connects to Lamu and Mombasa



Tourism Opportunity

Develop eco-lodges, mobile tented camps, and research centres.

The land offers potential for diverse tourism products from conventional wildlife safaris, cultural tourism, nature and photographic safaris.

Investors will get long-term leases and other favourable terms of business partnership.

Other Opportunities

Wildlife conservation – suitable for institutions

Livestock production – livestock value chain investments

Clean energy – investment in solar and wind energy

Carbon trading

Water infrastructure

Laikipia Conservancies



Lekurruki Conservancy, Laikipia

“ Rugged wilderness and wildlife corridor”



Lekurruki Conservancy is a 7,800-ha community-managed conservancy in the greater Laikipia ecosystem. It is endowed with dramatic landscapes and rich biodiversity. The rugged wilderness serves as a wildlife corridor and sanctuary for key species such as elephants, African wild dogs, Grevy’s zebras, leopards, and numerous birds.

It is owned and managed by the Lekurruki community, and hosts **Tassia Eco-Lodge**, whose revenue supports community livelihoods. It’s a perfect model for community-led conservation in pursuit of sustainable development.



Tourism Opportunity

Development of a **high-end tented camp or eco-lodge**. Several sites are tentatively identified.

Supporting factors for the lodge include unique wildlife and culture, and a chance to roll out many adventure tourism products, such as camel safaris, guided walks, rock climbing and hiking.

The community offers long-term partnership arrangements, including land lease agreements and revenue-sharing models, with a strong emphasis on sustainability, community empowerment, and conservation.

The new investor may also be given a chance to manage the existing facility and help uplift the standards of service.

Naibunga Central Community Conservancy, Laikipia

“The apex of cultural diversity”

Naibunga Central Community Conservancy is a 11509-ha rangeland constituted by three community lands, hence the name Naibunga. It is home to abundant wildlife, rolling savannah plains, scenic hills, and a vibrantly rich culture of the local community.

It is owned by the Maasai and Samburu communities whose mainstay is livestock, which coexist in harmony with the wildlife that grace the vast habitats.



Tourism Opportunity

Development of **eco-tourism bandas** at Lauraki site.

The zone is a virgin wilderness and perfect for wildlife and nature safaris. Cultural safaris can thrive on the rich culture.

Other Opportunities

Commercial hay production has been identified as a viable activity in the Musul area targeted at the local and external pasture markets.

Commercial beadwork, based on the women-led beadwork activities that are currently done at a subsistence scale.



Naibunga Upper Community Conservancy, Laikipia

“A model of community conservation”



Naibunga Upper is a 13,145-ha community-owned and governed conservancy that envisions becoming a world-class model of community-led conservation.

The conservancy is rich in biodiversity and a haven for endangered species such as Grevy zebras and wild dogs, plus four of the big five (elephants, lions, buffalo and leopard). It may soon also host Rhinos through the Kenya Rhino Range Expansion Initiative.



Tourism Opportunity

30-bed lodge or tented camp. Will have 6,000 acres exclusive zone at Wakumbe Hills. Currently exists as a bush campsite.

12-bed capacity eco-lodge or camp. With an exclusive zone of about 1,000 acres at the Lare Onyokie site.

12-bed capacity eco-lodge or camp. Exclusive zone of about 500 acres at Noonkorienito site.

Upgrading Sunyai Campsite. Currently exists as a bush campsite. Put up new tents and set up an ablution block and kitchen.

Nareto Conservancy, Laikipia

“A blend of rocky wilderness and history”

Naretom Maasai term for “coming together” is a 2800-ha conservancy between Loldaiga conservancy and Ol Jogi conservancy.

It's a wildlife dispersal area connecting private and community conservancies such as Maiyanat and Naibunga Upper Conservancies. There is rich wildlife and biodiversity, with tracts of unspoilt wilderness dotted with numerous historical sites, geographical viewpoints and rocky outcrops which form idyllic vistas.



Tourism Opportunity

Tented Camp, Mobile Camp or Campsite. Potential tourism products include cultural manyattas, historical sites and conventional wildlife tourism. The landscape is also ideal for adventures like rock climbing and hiking.



Shulmai Community Conservancy, Laikipia

“Historical caves and a maternity for wild dogs”

Shulmai Conservancy is an 8,000-ha community conservancy owned by 1211 members. 6000 ha of the land is set aside for conservation, while the rest is for settlement and grazing.

It has diverse geography and scenery. The Shulmai caves in the north host a rich history of the Yaaku people and are reputed as the maternity for wild dogs. The conservancy offers beautiful vistas of the larger landscape, including Mukogodo Forest, Ewaso Nyiro River, and Mt Ololokwe.

Its a wildlife corridor connecting the Samburu landscape to Mt Kenya and Aberdare forests, hence always teeming with elephants and other.



Tourism Opportunity

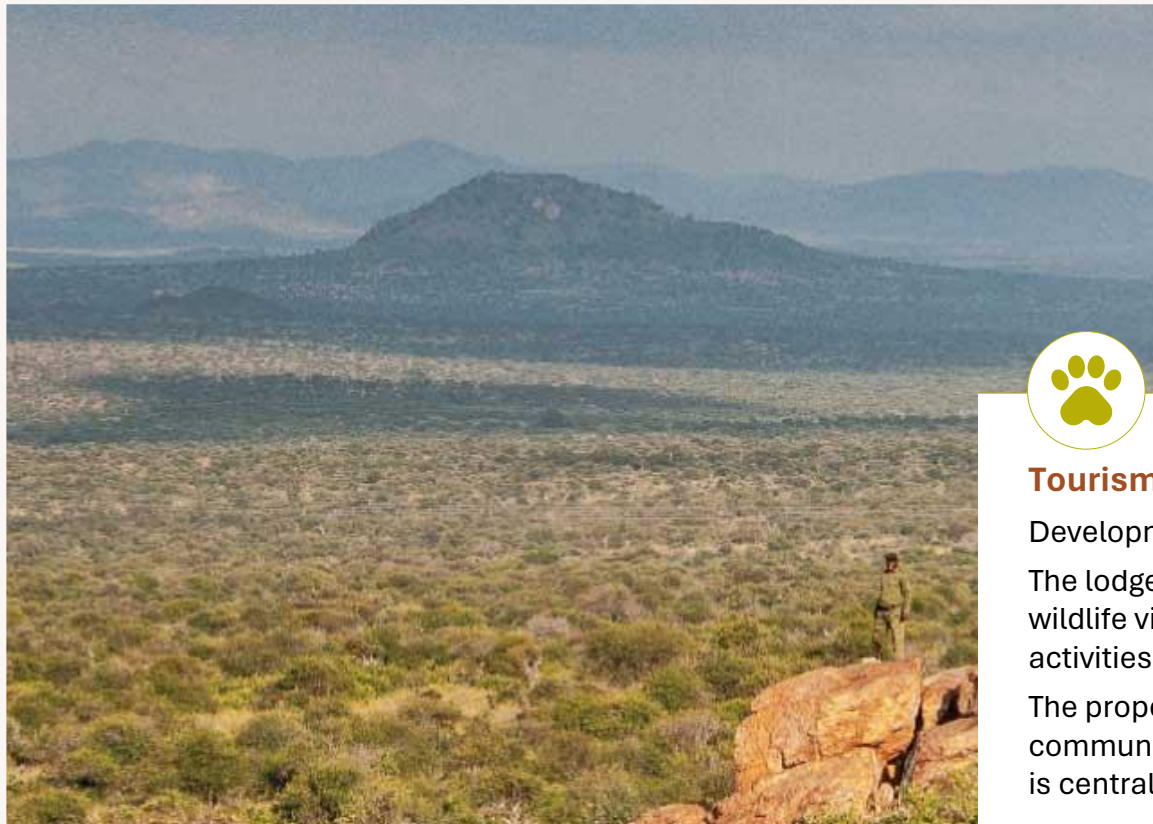
Establishment of an **eco-lodge or campsite**. There are plenty of products to support the lodge, especially adventure and wildlife tourism.

Yaaku Cultural Museum and Research Centre. To tap into the growing demand for research visits to the conservancy.



Mpala Ranch, Laikipia

“A deep story of science and sustainability”



Mpala is a 48,000-acre open savanna that seamlessly blends wildlife conservation, scientific research, education and sustainable livestock grazing.

It is home to a rich variety of wildlife, including elephants, lions, leopards, giraffes, Grevy’s zebras, African wild dogs and over 500 bird species. It also hosts leading global research institutions at the research centre.



Tourism Opportunity

Development of a **24-bed luxury ecolodge**.

The lodge will specialise in unique products offered by the ranch, including low-impact wildlife viewing, guided walks and night game drives, controlled access to research activities, etc.

The property has established infrastructure, including an airstrip, internal roads and communication networks. It enjoys excellent road access from Nanyuki and Nairobi, and is centrally located within major tourism circuits

Baringo conservancies



Tuiyarus Community Conservancy

“The corridor of Hope for Greater Kudu”



Tuiyarus is a 971-ha nascent conservancy established in 2023 by a community of 76 members. It is community-led and managed with a management board with strong women’s leadership

Found within the wildlife dispersal corridors of the Bogoria ecosystem, often described as the corridor of hope for the greater Kudus, where survival depends on the long-standing goodwill of the community.

It’s a highly biodiverse habitat, surrounded by Baringo hills and crossed by Maji Moto River and the historic and scenic Trans Rift Trail. Wildlife species include the greater kudu, wild dogs, the spark inch tortoise, and other reptiles

Named after a rare indigenous medicinal shrub unique to the landscape, Tuiyarus symbolises centuries of community-rooted stewardship of nature. It is indeed a hidden gem where conservation, culture, and community resilience intersect.



Tourism Opportunity

The conservancy is ready to unlock its massive potential in nature-based hospitality and invites like-minded investors and partners to explore these opportunities

Netbon Camp Development- an iconic eco-camp experience that offers visitors unforgettable nights under the stars, cultural immersion, and nature-based hospitality.

Eco-Tourism Experiences- Tap into the growing market of responsible tourism with guided wildlife and cultural experiences that celebrate local heritage and landscape beauty.

Nature Trails- Develop scenic walking, hiking, and birding trails across diverse terrain- ideal for eco-travellers, wellness seekers, and researchers.

Geo-Rocks & Hot Springs Attractions- Capitalise on Tuiyarus’ rare geological wonders with interpretive signage, guided excursions, and wellness features at the hot springs; this is a magnet for geo-tourism and wellness tourism.

Lodges and Bandas – to tap on the heritage stops

Tuiyarus is a paradise for adventure seekers. There are panoramic views from Kebene and Marmar hills, overlooking Lakes Baringo, Bogoria, and 94.

Visitors can explore rare geoformations, trek through cultural trails, and witness a model of conservation-driven development.

Sinibo Geosite Conservancy

“The Earth’s memory unearthed”



Established in 2016, **Sinibo Geosite Conservancy** is a 23-ha community-driven conservation initiative with 300 registered members dedicated to preserving one of Baringo’s hidden scientific and ecological treasures. Located along a vital wildlife corridor leading to Kamnarok National Reserve, Sinibo supports the migration of elephants, lions, rhinos, and antelopes, while offering a rare fusion of biodiversity and ancient history.



Tourism Opportunity

The community envisions transforming the site into a world-class fossil-heritage education destination, and is calling on investors to explore its immense tourism potential.

Development of accommodation – design and capacity to be discussed with potential investors.

Associated facilities to supplement accommodation include nature trails, viewpoints and picnic sites. There are numerous adventure products which include reptile and birdwatching, rock climbing, hiking and jungle camping.

At its heart lies a globally significant archaeological site, home to fossils such as the Lokichard molar, hippo molars, rhino premolars, giraffe hooves, and remains of small mammals. These relics offer unparalleled opportunities for geological research, paleo-education, and heritage tourism.

Other Opportunity

Honey Processing & Marketing Hub- Tap into the fast-growing organic honey and Baringos reputation of quality honey

Multi-Purpose Resource & Training Center- A vibrant space for fossil education

Ruko Wildlife Community Conservancy

“The return of the lost species”



Ruko Wildlife Community Conservancy is a 19,000-ha conservancy on the shores of Lake Baringo. Established in 2008, Ruko embodies a rare and powerful model of “conservation for peace,” where two historically divided communities united to protect nature, restore harmony, and build sustainable livelihoods.

It is home to the world’s most threatened giraffe - the iconic Rothschild’s (Baringo) giraffe - reintroduced to the conservancy as a beacon of ecological restoration. The sanctuary also protects impalas, kudus, ostriches, and a vibrant array of birdlife, creating a haven for biodiversity and eco-tourism.

Ruko is more than a conservancy - it’s a living symbol of unity, resilience, and untapped potential. With basic infrastructure in place, the conservancy is investment-ready and calls on investors and partners to join them in shaping its next chapter.



Tourism Opportunity

Boating and Water Sports Gear- Leverage the serene waters of Lake Baringo to develop eco-friendly boat excursions, birdwatching cruises, and water sports

Campsite Development- Invest in a lakeside eco-campsite that caters to nature lovers, adventure seekers, and budget travelers looking for authentic experiences under the stars.

The location offers fascinating landscape and views of the Rift Valley, adding to its natural beauty and appeal for nature lovers and photographers.

Other Opportunity

Rangers’ Outpost- Support a well-equipped outpost to boost security, wildlife monitoring, and community ranger programs. Suitable for development partners

Kaptuya Community Conservancy

“Redefining Rift Valley’s beauty”



Kaptuya is 29,700-ha community conservancy established in 2008 with over 7000 members and a firm governance structure. It sits on rugged, ecologically rich landscape on the edge of the Great Rift Valley, bordering Laikipia County.

It is home to iconic wildlife such as elephants, leopards, cheetahs, hyenas, buffalos, dik-diks, and diverse bird species. The habitat is dominated by unique landscapes, an airstrip for light planes, evergreen bushland, and a diversity of indigenous trees.

Kaptuya champions peacebuilding, rangeland and grazing management, literacy, and sustainable livelihoods—all underpinned by a strong ethic of coexistence between people and nature. It is now ripe for nature-based enterprises.



Tourism Opportunity

Development of Eco-Lodges & Campsites – several sites exist offering panoramic views of the landscape

Nature Trails & Hiking Routes: Tap into the growing adventure tourism market with marked trails through scenic highlands and indigenous forest

Airstrip Infrastructure: Unlock the region’s tourism potential by enabling direct access for high-end travelers and emergency response

The area is ideal for a variety of tourism products. There is **Nachururu Waterfall** which is a natural attraction with potential to develop viewing decks, zip-lines, and eco-leisure spots.

Other products include guided safaris, bird and reptile watching expeditions and cultural tourism hosted by the authentic Pokot hospitality.

Western Conservancies



Lugari Wildlife Green Sanctuary

“A haven for indigenous trees”



Lugari Wildlife Green Sanctuary is a 60-acre conservation landscape teeming with numerous springs and swamps, forests and cliffs. It offers panoramic views of Mt. Elgon and the Cherangany Hills, as well as the iconic Mawe Tatu and River Nzoia

The sanctuary hosts over 200 tree species and more than 100 bird species, which include the endangered Grey Crowned Crane. There is a variety of primates and burrowing animals.

The sanctuary blends biodiversity conservation, cultural preservation, and ecotourism under a collaborative, community-centred management approach



Tourism Opportunity

Eco-Tourism

Development of a lodge and associated facilities, such as nature trails and canopy walkways.

The main attraction for tourism is the natural beauty of the indigenous forests and wetlands. It also protects rich cultural heritage with over 30 preserved early homesteads and sacred Tiriki sites, making it a perfect destination for cultural tourism

Other Opportunities

Nature Based Enterprises –

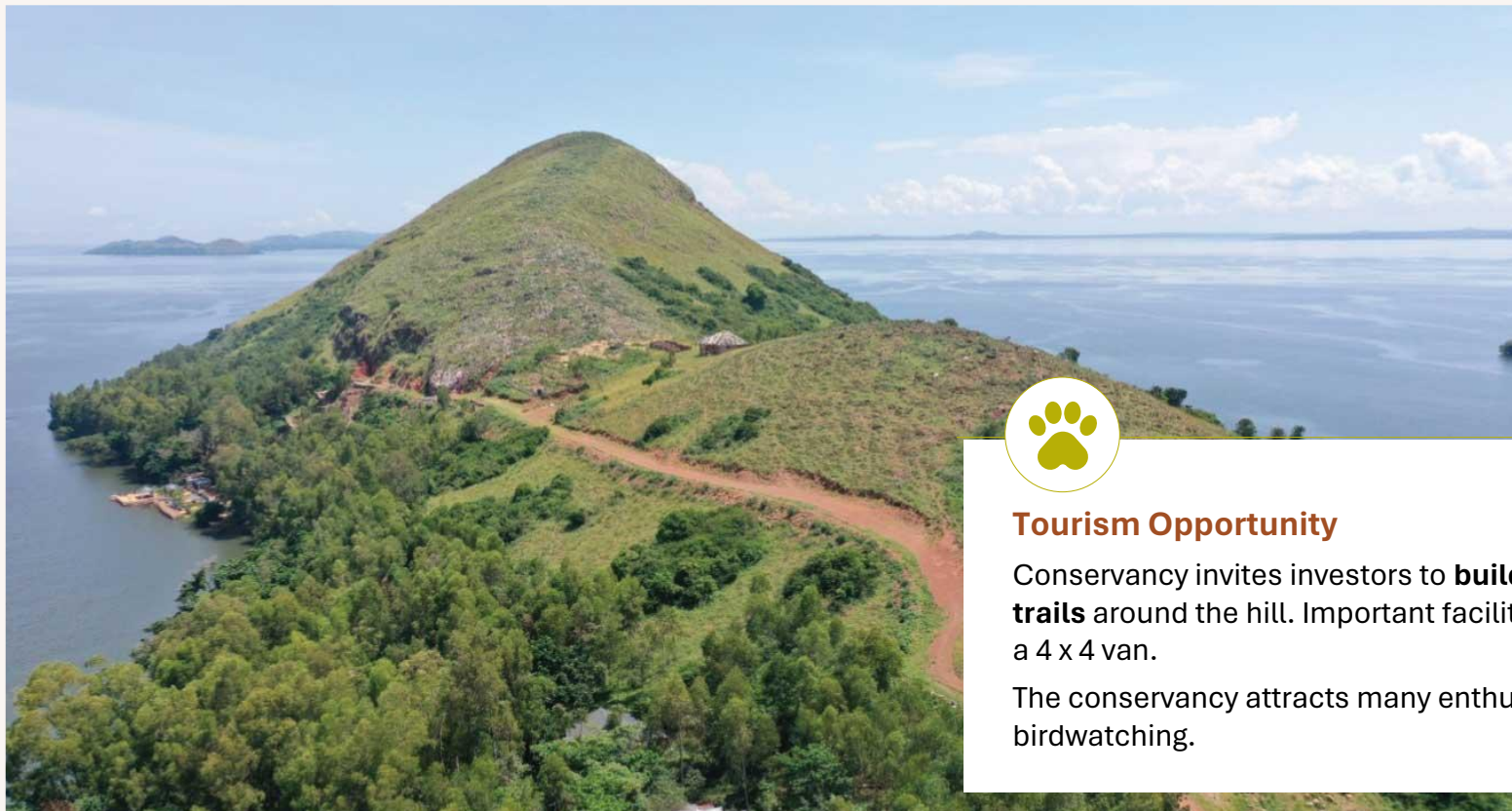
Beekeeping and organic farming

Carbon Credits -

Indigenous tree planting and habitat restoration

Mukhondo Conservancy, Busia

“A blend of adventure and biodiversity”



Mukhondo is a 43-acre conservancy which is emerging as a distinctive eco-tourism destination offering a rare blend of adventure and biodiversity. It is nestled in a scenic landscape and is home to unique wildlife, including wild bucks, monkeys, porcupines, and snakes such as pythons.



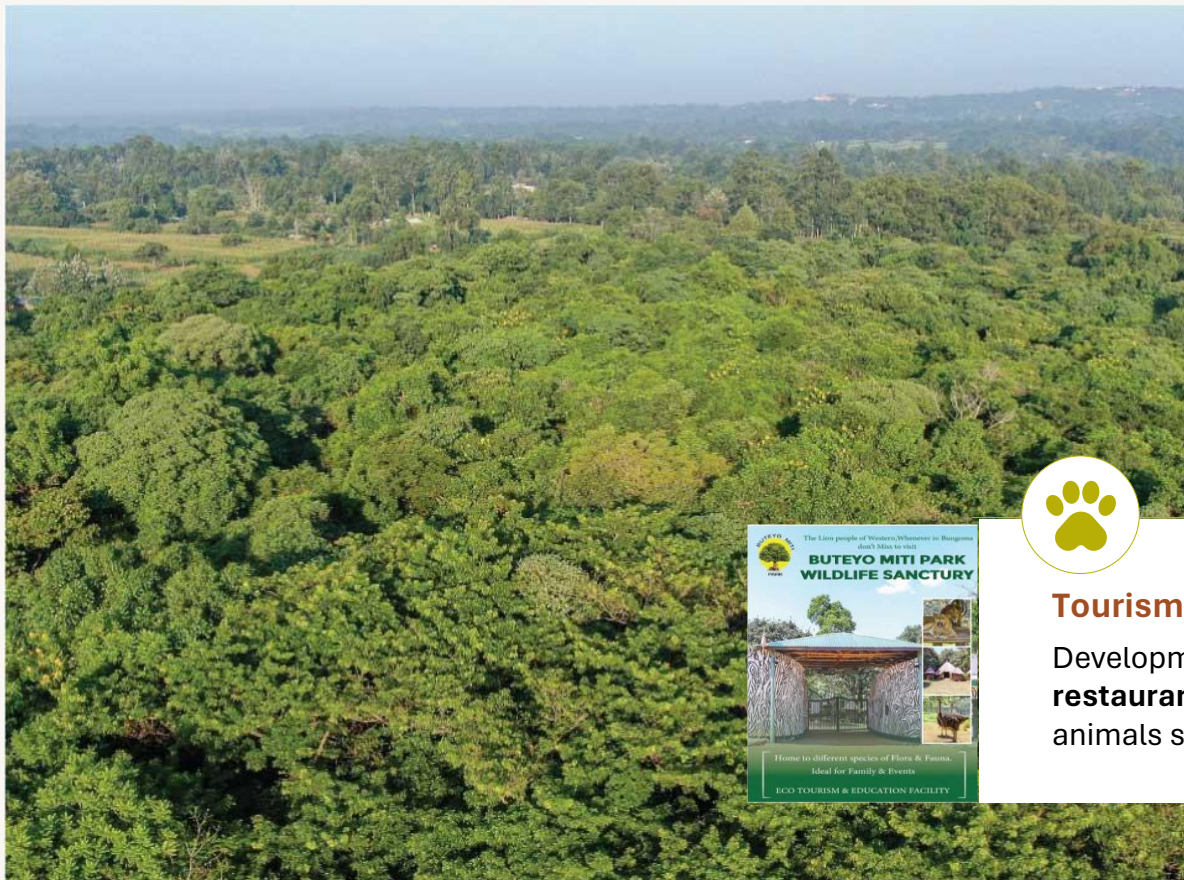
Tourism Opportunity

Conservancy invites investors to **build cottages, a conference centre and nature trails** around the hill. Important facilities to accompany this would be a motorboat and a 4 x 4 van.

The conservancy attracts many enthusiasts for water sports, mountain climbing, and birdwatching.

Buteyo Miti Park Conservancy, Bungoma

“Recreation in the woods”



Buteyo Miti Park is a 30-acre community-managed forest conservancy known for indigenous and medicinal trees. More than 100 species have been recorded. The rich biodiversity includes birds, butterflies, insects, lizards, and the rare De Brazza monkeys. It's a great model of community-led conservation and offers unique opportunities for compatible investments.



Tourism Opportunity

Development of a **medium-sized accommodation of about 30 pax, together with a restaurant and nature trails**. Expansion of the animal orphanage to give room for more animals such as zebras, impalas and baboons.

Amboseli conservancies



Ilaingarunyoni Conservancy

“Panoramic views of Lake Amboseli”



Is a **29,000-acre conservancy** adjoining Amboseli Park to the south and Ilaingarunyoni Hills to the west. It is a vital dispersal area for wildlife between Amboseli Park and Ilaingarunyoni Hills and Eselenkei/Imbirikani areas. Notably, it is home to rare species such as pangolins, painted dogs, and bat-eared foxes.

It is owned by the Maasai and Samburu communities whose mainstay is livestock, which coexist in harmony with the wildlife that grace the vast habitats.



Tourism Opportunity

1 Eco-lodge of not more than 30 beds proposed next to Ilaingarunyoni Hills.

Close proximity to Amboseli National Park makes it suitable for wildlife safaris. There are endless opportunities for adventure tourism and exclusive nature-based activities like walking, bird watching, bush dining, and exclusive retreats.

1 Special campsite of not more than 12 beds at Meshenani Camps, near Meshenani Gate.

The site is dotted by charming Acacia tortilis woodlands that open into the open plains overlooking Lake Amboseli and attract large herds of plains game.

Other Opportunities

Commercial honey production - Ilaingarunyoni conservancy has pristine vegetation and a variety of Acacia trees and other plants known to produce high quality honey.

Kitenden B Conservancy

“Magnificent vistas of Kilimanjaro”

It is a **26,000-acre well-established conservancy**, connecting the Amboseli National Park and Kitenden A conservancy, which provides ecological connectivity for wildlife into Mt. Kilimanjaro National Park. Wildlife abundance makes the conservancy ideal for wildlife viewing and Balloon safaris, commercial filming, etc. It is famous as a night refuge for many animals, making it suitable for night game drives.



Tourism Opportunity

Development of an **Eco-lodge or Camp**.

Kitenden B area offers magnificent vistas of Mt. Kilimanjaro. The Lemomo Hills along the western boundary suit many activities, including hiking and walking safaris, team building, and sundowners.



Olgulului Ranch Conservancy

“Scenic wildlife haven”

Is a **10,000-acre private ranch** adjacent to the Amboseli National Park. It’s a popular dispersal area for diverse wildlife and connects elephant corridors from adjacent community conservancies to the Enduiment Wildlife Management Area (Tanzania), making it a rich wildlife migratory area.

The conservancy has stunning scenery with distant views of Oldonyo Orok, Longido and Mt. Kilimanjaro.



Tourism Opportunity

Development of a **medium-sized lodge or camp**. It’s also suitable for mobile camp safaris and has several suitable sites.

Wildlife safari is a prime product for the area, and it is accessible by road through the Nairobi – Namanga Highway and by air at the Namanga Airstrip.



Oldonyo Wuas Conservancy

“Stunning scenery in Chyulu”



The **Oldonyo Wuas Conservancy** is 22,000 acres of open savannah plains in Imbirikani Group Ranch. It is well established, has an abundance of wildlife and is endowed with stunning scenery in the backdrop of Chyulu Hills. It is home to the unique fringe-eared oryx and hosts large herds of elephants and buffalo.



Tourism Opportunity

Development of a **medium-sized lodge**. Several sites were tentatively identified to guide the investor.

The area is perfect for wildlife safaris, while the twin hills are suited for climbing, hiking, cycling and wellness retreats.

Ole Narika Conservancy, Amboseli

“Perfect gateway to Amboseli Park”



Olenarika is 17,000 acres immediately to the south of the Amboseli Park’s Iremite Gate Road. It is well established and an important wildlife dispersal area between Amboseli NP and Imbirikani Group ranch, and onwards to the Chyulu Hills. The Ole Nareka viewpoint has panoramic views of Amboseli National Park and Mt Kilimanjaro, and Nduinet Hills in Tanzania.

The conservancy is also home to the Team Lioness Ranger unit, which is an all-female ranger unit that conducts wildlife security patrols and community outreach programs



Tourism Opportunity

1 eco-lodge of 15 rooms at the Ole Narika Hill. The site has lofty views overlooking the Amboseli National Park and offers stunning sunsets

1 special campsite at Remite Campsite.

Abundant wildlife makes the conservancy ideal for game viewing and balloon safaris. Proximity to the main highway makes it ideal for self-drive clients

Olokurto Conservancy

“Lofty viewpoints on volcanic rocks”



The **Olokurto** is a 32,000-acre conservancy in Imbirikani Group Ranch. It has lush grass plains strewn with volcanic rocks and caves, and is also endowed with rich wildlife as it's a dispersal area for large herbivores that move to and from Amboseli National Park, Chyulu Hills, and the Tsavo West National Park.

The beautiful chains of the Chyulu Hills and Mt. Kilimanjaro provide scenic backgrounds.



Tourism Opportunity

Development of **Lodge or Camp**. The conservancy has many beautiful locations for investors to choose from.

Many tourism products suit the landscape is suitable for many products in adventure tourism, including rock climbing and exclusive retreats.

Rombo Emampuli Conservancy

“A premier research tourism centre”

Rombo Emampuli is an established 22,000-acre conservancy on the Eastern side of the Rombo Group Ranch. It provides habitat connectivity for wildlife from the Amboseli National Park to Tsavo West.

Geographical features include the Rombo River, Tangwa Valley and Lenkopito Hill, making it rich in biodiversity.



Tourism Opportunity

Development of **an eco-lodge or camp**. The main product is wildlife, and the conservancy is close to Tsavo West's Ziwani Gate entrance. Supplementary products include birdwatching, research and cultural tourism.



Nasaru Olosho Conservancy

“The gateway to Amboseli Ecosystem”



Nasaru Olosho is a 68,382-ha young conservancy on the north-eastern boundary of the Amboseli Ecosystem. The conservancy is rich in biodiversity, being a critical wildlife corridor connecting Amboseli National Park and the Tsavo and Chyulu hills conservation areas. Large mammals found in abundance include elephants, common wildebeest, buffalo and zebra. It has been a popular dry-season grazing area for the wildlife in the ecosystem, since time immemorial.



Tourism Opportunity

Development of suitable accommodation. Abundance of wildlife makes it ideal for a wildlife safari, and it is close to the major highways – Mombasa and Oloitokitok. The landscape is also suitable for nature walks, cycling, paragliding and motorsports.

Other Opportunities

- Pasture production and reseedling
- Livestock breeding enterprise
- Beekeeping investment

Lenkiloriti Conservancy

“A rich blend of rock and savanna”

The **Lenkiloriti Conservancy** is 21,00 acres of lush grass plains in the Imbirikani Group Ranch. It is strewn with volcanic rocks and a rich tapestry that is home to a treasure shielded from the world by an ancient volcanic landscape.



Tourism Opportunity

Development of **lodge, camp or bandas**. There are several sites that an investor can choose from. The area is suitable for rock climbing and related outdoor excursions as well as game viewing



Noonkiyiaa Conservancy

“Authentic wilderness appeal”

The **Noonkiyiaa** is a 41,000-acre conservancy in Imbirikani Group Ranch. It boasts of stunning landscapes, with the beautiful chains of the Chyulu Hills to the north and Mt. Kilimanjaro to the distant south. It is also home to diverse wildlife and a rich Maasai culture.



Tourism Opportunity

Development of an **eco-lodge**. There are numerous suitable locations to choose from.

The conservancy presents an authentic wilderness appeal that is great for nature walks, bird watching, hiking, cave visits and game drives.



Athi-Kapiti conservancies



Lukenya Hills / Kasanga Ranch

“Premier destination for motorsports”



It is a **4000-acre wildlife estate** in the heart of Athi-Kapiti Plains, just 44 km from Nairobi City. It is strewn with rugged terrain, featuring a dramatic inselberg rising from the Athi River plains

It has been a premier destination for off-road motorsports for the past two decades and is popular with adventure seekers who cherish outdoor activities such as mountain climbing, camping, horse riding, cycling and more.



Tourism Opportunity

Sports Tourism

This is the ultimate destination for jungle sports. From motocross, marathons, hiking, to off-road challenges and biking.

The varied landscape features are ideal for innovative adventure products

Other Opportunities

Nature-integrated residential spaces

Lukenya Wildlife Conservancy

“Savanna charm close to the city”



Lukenya Wildlife Conservancy is an established 4,000-acre sanctuary adjoining two adjacent conservancies in the heart of the Athi-Kapiti Ecosystem. It blends recreation, conservation, and community empowerment.

It features flat landscape and pristine wilderness that is a prime wildlife corridor, and a nearby water pan attracts abundant wildlife at night. With minimal light pollution, the location is ideal for stargazing



Tourism Opportunity

Development of Eco-Campsite

The conservancy has identified a location to be discussed with the investor. It has a stable management and proximity to Nairobi, and easy access makes it a perfect getaway for city dwellers

ILRI Kapiti

“Making livestock farming profitable”



ILRI Kapiti is a 13,000-ha land at the heart of the Athi-Kapiti Ecosystem. It is blessed with abundant natural pastures and established infrastructure.

The recurrent dry spells in the ecosystem severely affect pasture availability, leading to poor livestock body condition, high mortality, and significant economic losses to the local community, who are mainly pastoralists.

ILRI is strategically positioned to provide a solution by serving as a livestock offtake and fattening hub during the dry season. It has a planned output of up to 1,200 steers per year. The animals will be fattened using existing natural pastures, supplemented with cultivated fodder, and sold to formal markets at optimal body condition.



Investment Opportunity

Co-funding or partnership

The investor/s will join ILRI in advancing these objectives:

Livelihood Support - alternative to destocking by selling under-conditioned cattle at fair prices.

Fattening Program - Use a rotational grazing system and supplementary feeding with fodder crops.

Market Linkage - Develop partnerships with abattoirs, traders, and processors to ensure timely disposal at profitable prices.

Knowledge Sharing - Showcase improved rangeland and livestock management techniques

Savannah Ranch, Kajiado

“Nairobi National Park’s ecological buddy!”



The Savannah Ranch is a 47-ha land bordering Nairobi National Park to the north and private community lands to the south. It is part of the unique Nairobi National Park and the larger Athi-Kapiti ecosystem with similar habitats to those of the park, such as the riverine vegetation, savannah grasslands and woodlands.

It is rich in plains game similar to Nairobi Park, and hosts large herds of Cape buffaloes, gazelles, zebras, and Maasai giraffes. The wildebeest and zebra use the area as a migration corridor to the south of the park to reach the Athi-Kapiti plains, where they disperse over the plains in the wet season and return to the park in the dry season.



Tourism Opportunity

Development of a **lodge**. The design and capacity to be discussed with the investor

The ranch is a prime spot for tourism investment as it directly borders the Nairobi Park. A footbridge into the park has been approved by KWS and will make access to the park easy and adventurous

It is easily accessible from different directions and the roads to the ranch are all weather.

Supplementary products include camping, eco-designed amusement park, guided walks and many more

Kajiado Central conservancies



Kikesen River Conservancy

“Harmony in the hills””

Kikesen River is an 11,225-ha conservancy in the heart of Matapato Rangelands. It serves as a vital wildlife corridor between Amboseli National Park and Lake Magadi and exemplifies a bold, community-driven commitment to protect biodiversity while upholding pastoralist heritage.

It is named after the Kikesen River that flows from the Meto Hills along the Kenya-Tanzania border toward Amboseli National Park. It is located 30km north of Namanga Town, with sweeping views of Kilimanjaro and Mt Meru.

The landscape teems with herds of gazelles, giraffes, zebras, elands, kudus, wildebeests, leopards, cheetahs, and endangered African wild dogs and is also rich in birdlife.



Tourism Opportunity

Development of a **12-room luxury tented camp or eco-lodge**

The location has easy access from the Nairobi-Arusha highway. The route is popular with international tourists visiting Northern Tanzania and can be a perfect base for climbers of Mt Kilimanjaro.

The rolling landscapes are perfect anchors for a variety of adventure safaris, such as biking, paragliding and walking safaris.



Kwenia Vulture Sanctuary

“Refuge for vultures; birdwatchers’ paradise”



Kwenia Vultures Sanctuary is a 16,900-acre community-led conservation initiative focused on protecting critically endangered vultures, including the Egyptian vulture and Rüppell’s griffon vulture. The management board works with local communities and conservation partners to safeguard nesting habitats, reduce poisoning threats, and promote sustainable land use. The sanctuary is a biodiversity-rich in other birdlife.



Tourism Opportunity

Development of a “**birdwatching lodge**”
Supporting products include guided vulture cliff tours, cultural homestays, night game drives, rock-climbing, and hiking trails.

Other Opportunities

Conservation Enterprises: Commercial beekeeping, beadworks, eco-charcoal (uprooting of invasive species such as *Prosopis Julifrola*), and indigenous plant nurseries.

Research & Education Hubs: Development of a vulture conservation field station and emergency avian holding clinic an education centre to host local and international researchers and students.

Carbon Sequestration & Land Restoration: Investments in reforestation and removal of invasive species (e.g. *Prosopis juliflora*) to restore degraded habitats.

Renewable Energy: Small-scale solar energy systems to support sanctuary operations and local communities.

Parsilet Conservancy, Kajiado

“A gem of historical sites”



Parsilet is a 6,000-acre conservancy which offers a rich blend of wildlife, history, and culture. It is home to a variety of wildlife species and features unique campsites ideal for immersive experiences in nature. The conservancy also hosts World War II historical sites and showcases the vibrant traditions and cultural heritage of the local Maasai community, making it a truly unique conservation and tourism destination.



Tourism Opportunity

Development of a **mid-sized lodge or camp**. The unique historical sites make it a prime destination for cultural and research tourism. There are also opportunities for nature-based adventures, such as birdwatching, walking and cycling.

Other Opportunities

Commercial beekeeping. Pristine vegetation and large stands of acacia trees, plus high temperatures, guarantee high-quality honey.

Empaash Ooloirienito Conservancy

“A blend of eco-tourism and beekeeping”

Empash Ooloirienito is a 3,175-acre conservancy managed by the local community to promote coexistence between people, livestock, and wildlife. It plays a vital role in protecting key wildlife corridors linking Amboseli to neighbouring ecosystems. The main land use is livestock, and the conservancy practices ecotourism and beekeeping.



Tourism Opportunity

Renovation, upgrading and management of a campsite. Supporting activities for tourism include wildlife, especially giraffes and birdwatching.

Other Opportunities

Commercial beekeeping. Interested investors will get favourable terms of partnership with the community to ensure a profitable enterprise.



Olerai Conservancy, Isinya

“A hidden wilderness in the city”



Olerai is a 4,000-acre conservancy within the Kitengela game conservation area, 20 km south-west of Nairobi National Park and only 10km off Kiserian-Isinya Road. It is named after the locally revered *Acacia seyal*, presents a lush tapestry of woody vegetation, adorned by narrow ribbons of riverine growth from seasonal streams.

Amidst this enchanting landscape, a diverse array of wildlife thrives, including gazelles and zebras. The expansive grasslands are renowned as breeding grounds for the majestic Eland antelope and the iconic Maasai Ostrich. It is a haven for grassland birds and the critically endangered white-backed vulture finds sanctuary here, boasting up to 13 recorded colonies within the Conservancy, which is also a roosting site for Ruppel’s vulture.



Tourism Opportunity

Opportunity exists for co-investment in:

20-room Luxury Lodge

- Premium accommodations featuring a helicopter pad and infinity pool for high-net-worth travellers.

20-room Tented Camp

- Mid-tier tents with private verandas & en-suite bathrooms, blending adventure and comfort.

Luxury Private Villa (4–5-bedroom Airbnb-style house)

- Exclusive rental for luxury travellers, families, and corporate groups.

Special Campsite and Glamping

Olerai is perfect for tourism investment. A chance to co-create an exclusive wilderness immersion and wildlife experience close to the city. Supplementary products include nature walks, cycling trails, and zip-lining

Mara Conservancies



The Pardamat Conservation Area

“Model of coexistence; a maternity ward for jumbos”



Pardamat is a 64,000-acre premier mixed-use conservancy, encompassing wildlife, tourism, and the community. It is a wildlife dispersal route from the Loita plains connecting four established conservancies to the Mara Triangle and then to the Maasai Mara National Reserve. Its hilly and forested terrain is cherished by elephants for browsing, and two dry season migratory routes for elephants pass through Pardamat. It's a known shelter for rare species such as the African wild dog, the pangolin and birds of prey.

The main geographical feature is Pardamat Hill, whose peak offers a 360-degree panoramic view of neighbouring conservancies, Mara Siria Escarpment, and Loita Hills.



Tourism Opportunity

1 12-room luxury camp – A site is identified in a prime wildlife zone with lush woodlands and riverine vegetation.

2 luxury villas or cottages, each with a 10 pax capacity - at the Hilltop. The site is perfectly ideal for exclusive wilderness tourism. Suitable products here include horse riding, star beds, elite weddings and bush dining.

2 exclusive bush homes, each with 5 pax capacity – suitable sites will be identified

Pardamat is an excellent destination for tourism investment. There is a modern, aviation-compliant airstrip, served by a network of all-weather roads. It is a perfect destination for specialised safaris such as elephant research and tracking of rare species. The mixed-use model it pioneers will continue to attract global curiosity and specialised tourism.

Other Opportunities

Dairy and beef livestock production

Mount Suswa Conservancy

“A geological theatre; hikers’ paradise”



Mt Suswa is an 8000-ha conservancy owned and managed by a community of about 200 local families. It was founded to conserve its unique biogeographical heritage and enhance its ecological value by promoting tourism and livestock activities.

The most unique feature is Mt Suswa, which consists of many spectacular geological features, including our 12km double-crater and a network of subterranean caves.

There are about 30 different entrances to the caves. Some have beautiful collapsed roofs, others are filled with giant bats. Our most famous cave is known as the “Baboon Parliament’ because, every day, dozens of baboons gather in it to listen to their leader.

The mountain is rich in biodiversity. Common plants include giant fig trees to dainty mountain flowers, and it is also home to many animals, including baboons, leopards, spotted hyenas, civet cats, wild dogs, rock hyraxes and many birds.



Tourism Opportunity

Development of an accommodation facility. The size and design are to be discussed with the investor.

Other Opportunities

Mt Suswa is a prime tourism location due to its proximity to Nairobi city, just a 2-hour drive through Mai Mahiu and 1.30 hours through Ngong. It is also a popular hiking and camping destination for the urban population, while the lava tubes and caves are popular attractions for researchers and adventure seekers\.

Mara Isinya Conservancy

“A pilgrim for elephant salt lick”



Mara Isinya Conservancy is an upcoming mixed-model conservancy on the southern part of Lemek valley, north-east of Pardamat and east of Mara North Conservancy.

It is the last undisturbed dispersal area of the Mara-Serengeti ecosystem and is a popular pilgrimage saltlick for elephants and a critical wild dog and a territory for the endangered Maasai giraffe.

The terrain is both mountainous and flat grassland plains with scattered dense woodlands that form breeding grounds for elephants and wild dogs.



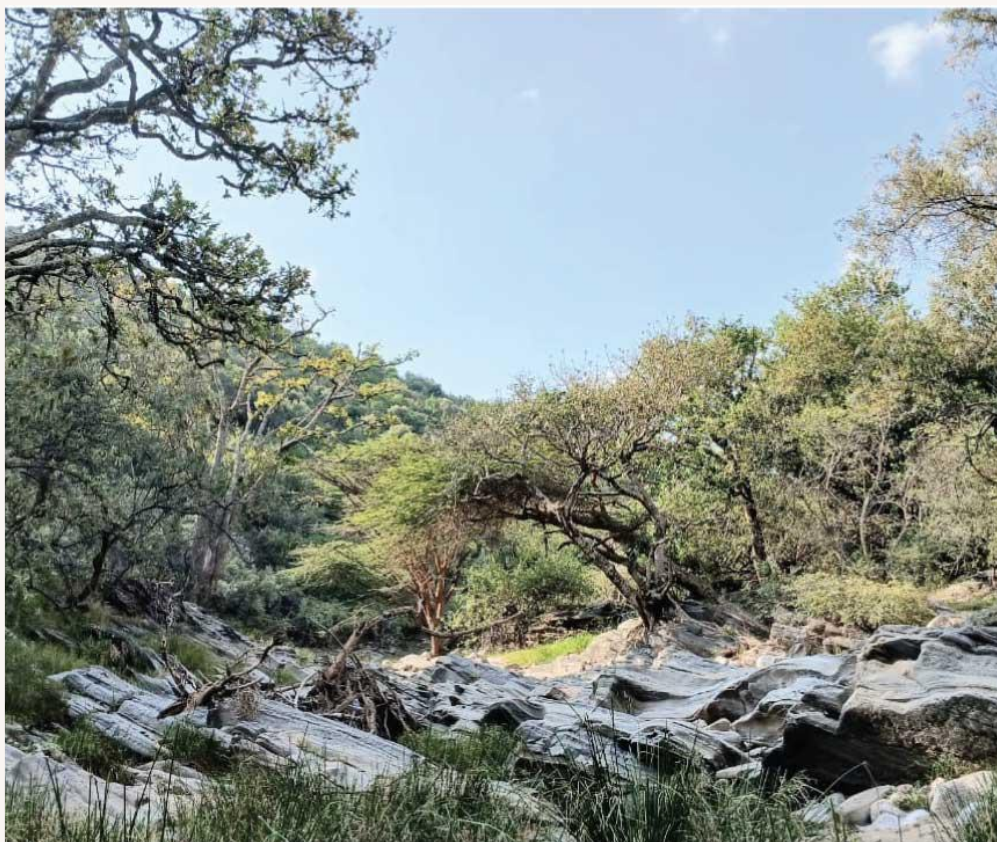
Tourism Opportunity

Development of **eco-lodge or tented camp**. The conservancy has several suitable sites that will be discussed with the investor.

Suitable products to support the investment include nature excursions such as camping, rock climbing and birdwatching. The conservancy easily piggybacks on the general Maasai Mara tourism destination.

Orpua Mara Conservancy

“At the heartbeat of migration”



Orpua Mara is a nascent conservancy founded in 2021. It is situated along the Sand River, which is the largest wildlife corridor in the Mara Ecosystem and the ecological connection between the reserve and Loita Forest.

The conservancy has a high diversity of wildlife. It is centrally located within the annual migration between Serengeti and Mara and shelters resident populations of wildebeests, elephants and other plains game. It hosts several families of all the big cats that Mara is renowned for.



Tourism Opportunity

Development and co-development of accommodation. The site and design of the facility will be discussed with the investor.

The conservancy is a perfect destination for wildlife safaris, being at the centre of the famous migration and next to one of the most prime game drive spots of the reserve.

Taita Taveta Conservancies



Amaka Ranch

“A pioneer livestock enterprise”



Amaka is a 4,815-acre thriving enterprise, established in 1967 as a livestock production ranch.

The ranch’s successful livestock operations are supported by well-established infrastructure, which includes the large Amka Dam, which supplies water to livestock and wildlife. The ranch also has a 2,000-acre hay and feedlot production facility, one of the first of its kind to be established in Taita County. It is easily accessible from Makinon Road and Rukanga towns.

There is abundant wildlife, serving as a breeding habitat for elephants and lions and supporting a high population of giraffes.



Tourism Opportunity

Development of an **Eco-lodge at Amka headquarters**. An old colonial house can be upgraded, and there are suitable camping grounds.

The high elevation of this location gives fabulous views of the terrain and distant plains, while the availability of water attracts huge populations of wildlife.

Adventure tourism products include fishing and camping at Kaljaa Dam, and trekking to Kasigau and Kilibasi Hills

Other Opportunities

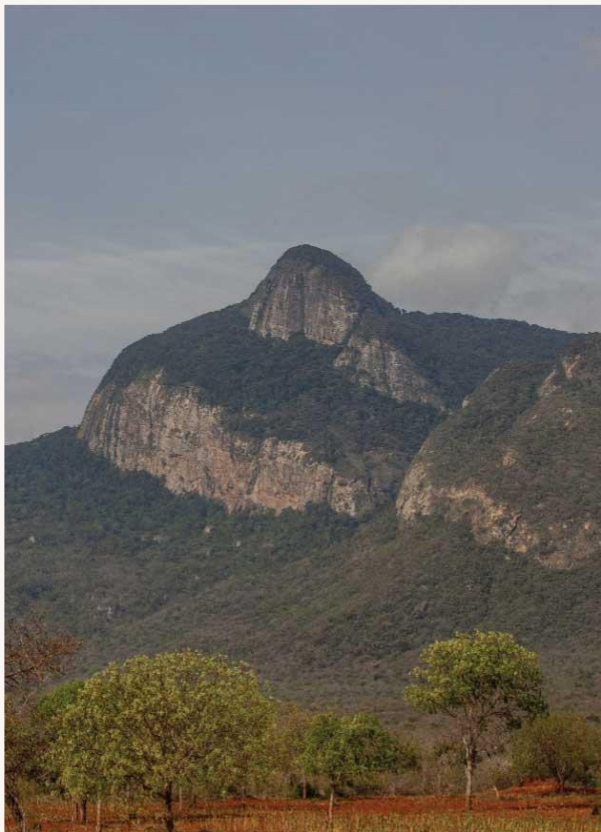
Livestock Production - Beef steers, fattening and breeding, Commercial Hay production

Conservation Enterprise – Wildlife farming, eg, chameleon, fish farming

Sustainable Mineral Prospecting

Kasigau Wildlife Conservancy

“A paradise of knolls and dams”



Kasigau is a well-established 54,000-acre ranch and conservancy bordering Maungu Ranch to the north and Tsavo West National Park to the west.

It is part of the Kasigau Wildlife Corridor, renowned for the migration of large herbivores, especially elephants, between Tsavo East and Tsavo West National Parks.

This pristine wilderness has numerous scenic features, including vast grasslands and woody vegetation interspersed with knolls and natural dams. The picturesque Kiwanjani Rock is frequented by lions and is a reputed breeding site for the big cats. The ranch was also a former base for the well-known Finch Travels, a testament to its historical appeal to tourists.



Tourism Opportunity

Co-investment at the **eco-lodge at Kiwanjani Site**. It's an excellent location for wildlife viewing. Potential tourism products include hiking expeditions to Kasigau Hill, which offers panoramic views of the expansive landscape. The site is suitable for cabled cars or zip lining.

The ranch is easily accessible via an all-weather road from Maungu to Rukanga, about 18 km from the main Nairobi-Mombasa highway.

Other Opportunities

Conservation Enterprises – game farming

Livestock Production - Feedlot establishment, steer fattening and breeding

Beekeeping

Commercial hay production

Sustainable Mineral Prospecting

Lualenyi Ranch

“Taita’s livestock capital”



Lualenyi is an 86,000-acre ranch, bordering Tsavo West National Park to the west and south, the Taita Hills Wildlife Sanctuary and Lumo Conservancy to the north. It is the largest ranch in the Taita area, and also boasts the largest population of cattle population.

The ranch’s diverse landscape comprises ridges, hills, plains, and forests, creating a captivating beauty that is home to a vast wildlife population that streams in from the neighbouring national park. Large herds of elephants and other herbivores can be seen grazing on the Lualenyi plains from vantage points like the Mgama Ridge, Lion Rock, and Mtongoli Hill.



Tourism Opportunity

Development of an **Eco-lodge or camp**. Several sites have been identified

Mtongoli site – Situated at a stunning location, with the Usambara Mountains visible on the horizon. The site offers an unparalleled 360-degree view of the Mramba, Lumo, and Lualenyi landscape, and the site is complemented by the Mgama Ridges on the border with Kutima Ranch and the nearby Lion Rock.

Lion Rock site - which rises dramatically above the plains, and the Big Dam, a water feature unlike any other in Taita.

Mgama Ridge - traverses the ranch from the headquarters to its boundary with the Taita Hills Wildlife Sanctuary, while the River Bura provides an opportunity to spot leopards, cheetahs, and ostriches.

The Shujaa site - located in the middle of the ranch.

Other Opportunities

Livestock production

Game filming

Research and education centre

Carbon trading

Commercial hay production

Mbale Ranch

“Transfrontier wilderness paradise”



Mbale is a 54,000-acre trans frontier conservancy bordering both Kwale County and Tanzania and adjoins Kasigau Ranch to the north, and Tsavo West National Park to the west.

It's a crucial wildlife dispersal area, especially during the dry season, and is a key part of the Kasigau Wildlife Corridor.

The ranch's diverse landscape features open grass plains, savannah woodlands, and intermittent forests. The seasonal Mwatate River meanders through the property, adding to its ecological richness.



Tourism Opportunity

Development of **exclusive lodges and camps**. Several sites have been identified:

Helmesh and Tugwe rock outcrops – A water catchment and perfect site for exclusive tourism development.

Rima Ngo'mbe Hills - A unique constellation of three hills, resembling an ungulate's toe. It offers a picturesque view of the Usambara Mountains. On clear days, Mount Kilimanjaro is visible in the distant background.

Convergence zone - of the Bura and Kasigau ranches at Mkamenyi is a prime wilderness spot for adventure tourism.

The Tugwe rock - potentially a very scenic retreat with beautiful vistas of the Usambara Mountains. There are plans to establish a dedicated wildlife conservancy on the ranch to further enhance its appeal as a prime conservation and tourism destination.

Other Opportunities

Conservation enterprise – e.g. ostrich farming

Livestock production -dairy and beef products

Commercial hay production

Sustainable mineral prospecting

Mgeno Wildlife Conservancy

“Breathtaking savanna woodlands”



Mgeno Wildlife Conservancy is a 53,000-acre community-led conservancy in the heart of the Tsavo landscape. It is a biodiversity-rich and dispersal area connecting Tsavo West and East National Parks.

The area’s exceptional value lies in its natural features with breathtaking beauty. The savannah grassland and woodlands host a wide variety of wildlife, including elephants, buffalo, lions, and leopards, and a rich birdlife.

Mgeno Conservancy’s core business has long been livestock ranching, supplemented by hay production and beekeeping. It also benefits from the Kasigau REDD+ carbon project.



Tourism Opportunity

Development of a **lodge or camp**.
Potential sites have been identified.

Pusa Hill - it’s an iconic attraction near the conservancy headquarters.

Zaghatise Hill- which holds cultural significance.

Tourism products include wildlife viewing, bird watching, nature walking and rock climbing, biking, film making, marathon and wildlife education.

Other Opportunities

Beef and dairy livestock production

Game farming – eg snake park

Commercial beekeeping

Mwaluganje Community Wildlife Conservancy, Kwale

“Shimba Hills’ elephant bedroom”

Mwaluganje Elephant Sanctuary was established in 1994 and is the first community ecotourism project in Kenya. It is a 10,100-acre corridor between the Shimba Hills National Reserve and Mwaluganje Forest Reserve.

The area has a rich biodiversity and was a traditional breeding ground for elephants from the Shimba Hills and Tsavos.



Tourism Opportunity

Construction of **eco-lodges and campsites**. Tourism appeal stems from pristine wilderness and access to Chitsandze waterfall. There are numerous tourism activities, including wildlife viewing, camping, hiking, and horse/camel safaris.

The investor can develop associated facilities such as low low-impact amusement park, a canopy walk, swimming and a host of related products.

Other Opportunities

Nature-based enterprises – such as honey production, commercial goat farming, elephant dung paper production and poultry farming.

Carbon Trading.

Ndera Community Conservancy, Tana River

“Sanctuary for endangered primates”

Ndera is a 116,370-ha community-owned and managed conservancy in the Tana Delta, representing the Pokomo and Wardei communities. The conservancy is a critical habitat for globally endangered primates, the Tana River Red Colobus, the Tana Mangabey. Other animals include Hirola antelope, elephants, while the river hosts schools of hippos and crocodiles.

Its unique riverine forest is rich in birdlife and hosts diverse tree species such as Ficus spp., Phoenix palms, and African ebony.



Tourism Opportunity

Development of Lodge and campsite at Lalafitu Forest along River Tana, where there is a dense population of primates, elephants and other wildlife.

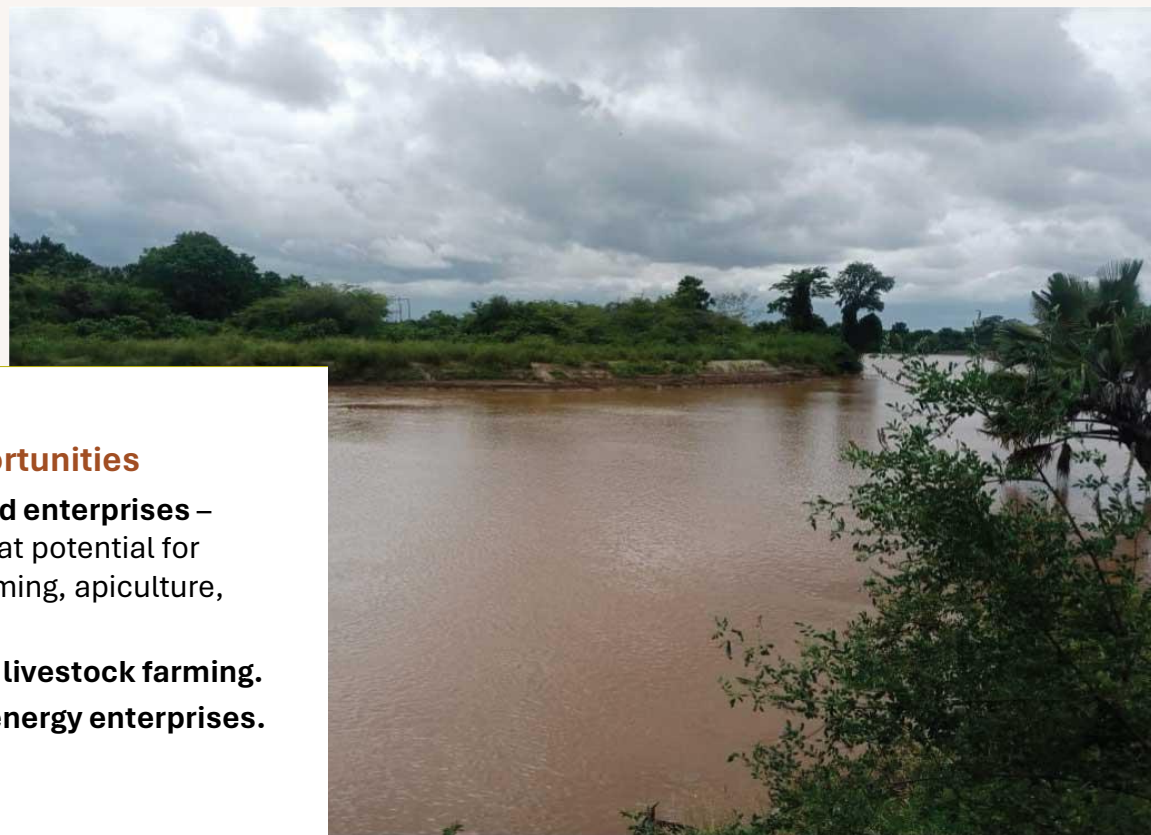
Other attractions include Lake Lemu, a natural oxbow lake, which hosts a wide variety of birds and lofty points for beautiful sunsets. The river offers an opportunity for boat rides and other water sports.



Shakako Community Conservancy, Tana River

“Gorgeous riverfront”

The **Shakako** is a 29,653-acre community conservancy, established in 2019 but still at the nascent stages of growth. It has a rich diversity of flora and fauna and undertakes multiple land uses such as agroforestry, sustainable farming, and controlled grazing.



Tourism Opportunity

Development of suitable **accommodation and conference**.

The attractions to support tourism include the LAPPSSET corridor, the scenic River Tana and other unique coastal features.

Suitable tourism products include nature trails, game drives, camping, hiking, boat riding, and cultural tourism.

Other Opportunities

Nature-based enterprises – There is a great potential for crocodile farming, apiculture, aquaculture,

Commercial livestock farming.

Renewable energy enterprises.



www.kwcakenya.com | info@kwcakenya.com | +254 708 418 522